



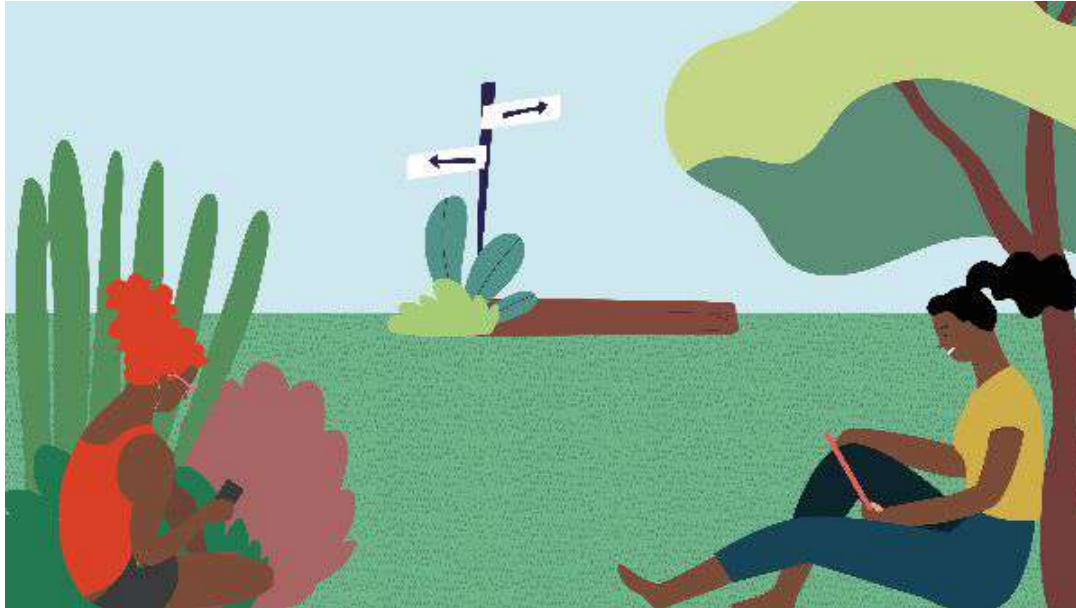
OUR GREEN SPACES

Cllr Caroline Woodley

**Cabinet Member for Families, Parks and
Leisure**

One of the greenest boroughs in inner city London

Hackney has one of the largest expanses of green spaces in inner London. We have 58 council maintained parks, gardens and open spaces totalling around 282 hectares and the largest concentration of football pitches in Europe.



Commitment to creating a greener, healthier Hackney

Elected on 2022 Manifesto, which includes pledges to:

- Deliver on our Parks and Green Spaces Strategy.
- Increase the number of Green Flag parks from 28 to a minimum of 32.
- Introduce a series of skill-sharing opportunities and growing workshops and appoint a dedicated Volunteering Officer to oversee a comprehensive volunteering programme in Hackney's parks and green spaces.
- Continue replacing all single use bins with dual-use recycling bins in all parks and green spaces.
- And to 'green the grey', with a network of green corridors planted with trees and wildflowers that will increase shade, support biodiversity, manage flooding risk and connect our parks, green spaces and nature conservation areas such as Abney Park and the Woodberry Wetlands.

Hackney Parks and Green Spaces Ten Year Strategy

- working with communities
- creating more welcoming spaces
- being more environmentally sustainable



The good news!

- Parks and Green Spaces Strategy: cited in GLA guidance on making London Green and Resilient.
- We share our progress in an annual report published on Council website.
- We have once again retained our 28 Green Flags and added one more, bringing the total to 29. We are on target to increase this to 32 by 2026.
- We will not only appoint a dedicated Volunteering Officer but a Biodiversity Officer to support our volunteering programme and nature recovery work.
- We are bringing more dual-use recycling bins parks and green spaces this autumn.
- We have been granted GLA Grow Back Greener and Rewilding funding in collaboration with community and park user groups
- Secured capital support from the council to continue our programme of improvements
- And adopted a Green Infrastructure Strategy and Local Nature Recovery Plan.

Read more here: <https://news.hackney.gov.uk/seven-year-plan-to-green-the-grey/>

The challenges!

Navigating an underfunded, highly visible and heavily used frontline service

- 40% reduction in LBH funding since 2010
- Pandemic
- Mental health and wellbeing
- Vandalism
- Heat stress
- Compaction
- Littering
- Meeting different needs
- Culture of instant response

We know that investing in high quality green space carries a wide range of benefits, from public health to social cohesion, promoting sustainability and biodiversity.

During the pandemic we saw unprecedented numbers visit our parks and green spaces. This brought the opportunity of increased engagement in our plans and strategies. Combined with Brexit and the war in Ukraine it also brought challenge:

- delay to major works
- increase in costs and delivery time of materials and labour
- Increase in energy costs
- soil compaction and risk to trees
- littering and anti-social behaviour

While much of our time and resources goes into meeting these additional pressures, we have made progress:

- A new Splash Pad at Clissold Park. **We will consult on options for repurposing the old paddling pool.**
- Heritage Lottery Fund supported refurbishment of Springfield Park and Abney Park
- Improvement projects at Shoreditch Park and Daubeney Fields
- Play area refurbishments across the borough including Clapton Pond, Butterfield Green, Clapton Square, Haggerston Park and Stoke Newington Common.
- Next up: Clapton Commons, Stonebridge Gardens, Hackney Downs and Well Street Common. **We know that the play area in Clissold Park will also need attention next year.**

We have refurbished public conveniences in parks – most notably in Clissold Park, Haggerston and London Fields – and are turning our attention to cafes and catering outlets, with Finks Pump House setting a great example to how ‘kiosks’ can be professionally run.

In light of our work around nature recovery and concern about soil compaction as well as increased public awareness of the importance of biodiversity we have allowed some areas of our parks to grow a little wilder as well as planting colourful wildflower meadows.



Green Infrastructure Strategy

The term green infrastructure describes the network of parks and green spaces, trees and woodlands, rivers and wetlands, and new green features in the urban environment such as green roofs and walls. In Hackney we have a network of:

- Metropolitan Open Land (MOL) parks and green spaces that we maintain
- Amenity grassland around housing estates
- Woodlands
- Street trees
- Gardens
- Public realm
- Wetlands and waterways

Existing Baseline Green Cover

26%

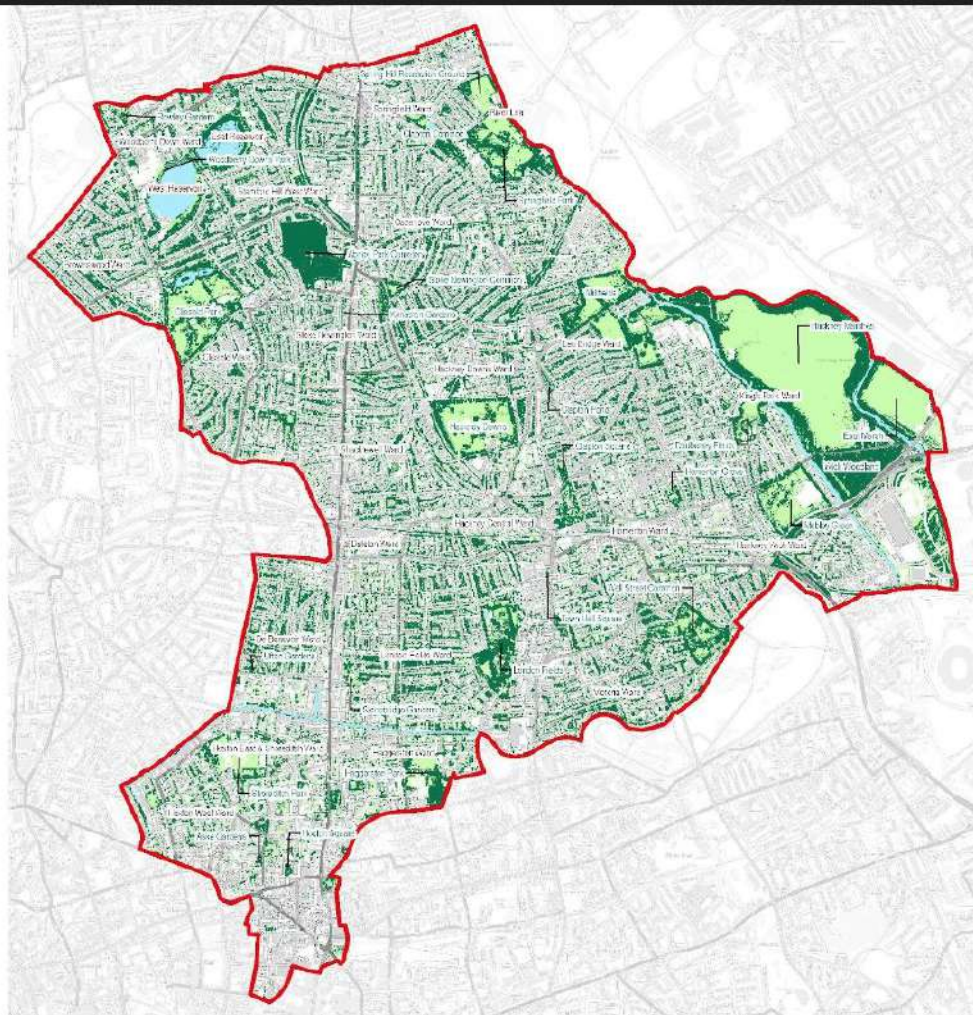
public open space

38%

'green'

4th

greenest borough
in London,
according to
London's Natural
Capital Account



Legend
Hackney borough boundary
GLA Canopy Cover
Blue Cover
Green Cover

AECOM

We have delivered a programme of 5000 new street trees, begun to develop a network of rain gardens (sustainable urban drainage systems), and we're reducing herbicide-use and increasing biodiversity

Our work in Parks and Green infrastructure has a key role to play in:

A Changing Climate - Cooling the Urban Environment and Improving Air Quality

Community Food Growing

Encouraging Walking and Cycling

Enhancing Biodiversity and Ecological Resilience

Improving Health and Wellbeing, Access to Nature, Community Cohesion, Managing Flood Risk

And meeting the needs of our densely built borough.

We have worked hard to maintain our parks and received many compliments for the work we've done to keep these heavily used spaces open, clear of litter and available to as many people and activities as possible.

We are so grateful to the numerous volunteer groups in Hackney who are dedicated to tree planting, litter picking and event organising.

Thank you!



Get in touch!

caroline.woodley@hackney.gov.uk